

# OB28240 ORBIS COMPACT

230V 50/HZ

OB28240

OB28240/EURO

OB28240/OZ

SERIES C

Service Parts List Issue 7 Dated 06-September-2013

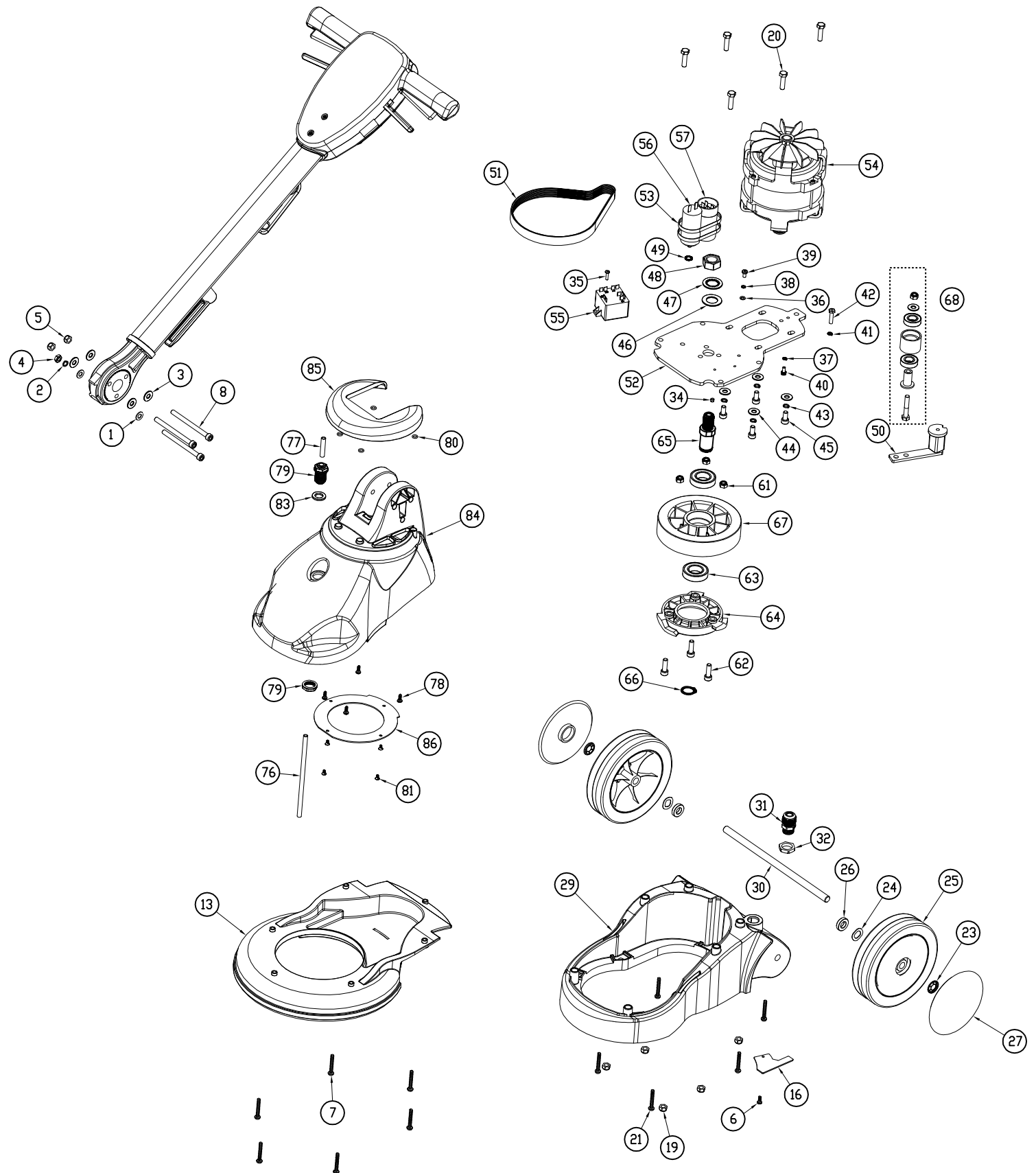
Ref. Drawing 09-1059-0000 Issue 1 Dated 21st September 2011

Drawing Ref.	Assembly / Kit Number	Description / Part Number	Qty
	<b>OB28240 &amp; OB28240/EURO &amp; OB28240/OZ</b>	<b>ORBIS COMPACT 230V 50HZ UK &amp; EURO &amp; OZ</b>	<b>1</b>
1		00-0800-0501 M8 WASHER TYPE B	2
2		00-0800-0511 M8 SINGLE COIL SPRING WASHER	1
3		00-0800-0551 M8 WASHER	4
4		00-0800-0711 M8 HEX LOCK NUT BZP	1
5		00-0800-0751 M8 1/2 NYLOC NUT	2
6		02-3465-0000 SELF TAPPER (INNER SHIELD)	1
7		02-3515-0000 COVER SELF TAPPER KB60 x 40	6
8		02-4565-0000 M8x100 CAP HEAD BOLT	3
9		02-3537-0000 STRAPPING COIL 372.612.530 WHITE - NOT SHOWN ON DRAWING	8.66
10		03-5436-0000 TRUCARE SERVICE POSTCARDS - NOT SHOWN ON DRAWING	1
11		03-5866-0000 DATA PLATE #ADDITIONAL SPEC. - NOT SHOWN ON DRAWING	1
12		03-6126-0000 INSPECTION AND TEST RECORD TAG #ADDITIONAL SPEC. - NOT SHOWN ON DRAWING	1
13		03-8050-0067 ORBIS COMPACT BRUSH GUARD JET BLACK RAL9005	1
14		03-8068-0000 BODY CARTON PLAIN REF CP152468 - NOT SHOWN ON DRAWING	1
15		03-8069-0000 ORBIS COMPACT INSTRUCTION MANUAL - NOT SHOWN ON DRAWING	1
16		03-8075-0000 ELECTRICAL BLANKING PLATE	1
17		04-0221-0000 CABLE TIE BLACK REF NTB 50I - NOT SHOWN ON DRAWING	1
18	<b>05-4421-0000</b>	<b>ORBIS COMPACT 230V 50Hz BASE ASSEMBLY</b>	
19		00-0800-0751 M8 1/2 NYLOC NUT	5
20		00-0830-0111 M8 x 30 HEX HD BOLT	5
21		02-3515-0000 COVER SELF TAPPER KB60 x 40	6
22	<b>05-4419-0000</b>	<b>ORBIS COMPACT CHASSIS ASSEMBLY INCLUDES THE FOLLOWING PARTS:</b>	
23		02-0254-0000 STARLOCK WASHER	2
24		02-3185-0000 CRINKLE WASHER	2
25		02-3649-0000 WHEEL 7" CHAMP MK2	2
26		03-5736-0000 WHEEL AXLE SPACER	2
27		03-6080-0035 HUB CAP WATER BLUE	2
28		03-6149-0000 ORBIS WHEEL CAP LABEL - NOT SHOWN ON DRAWING	2
29		03-8049-0035 ORBIS COMPACT BASE MOULD (RAL 7021)	1
30		03-8057-0000 WHEEL AXLE	1
31		04-3212-0000 M20 CABLE GLAND	1
32		04-3213-0000 M20 CABLE GLAND BACK NUT	1
33	<b>05-4420-0000</b>	<b>ORBIS COMPACT MOTOR DRIVE PLATE ASSEMBLY</b>	
34		00-0400-0721 M4 HEX NYLOC NUT BZP DIN985	1
35		00-0416-0011 M4 X 16 PAN POZI M/C SCREW BZP	1
36		00-0500-0501 M5 WASHER FORM A	1
37		00-0500-0511 M5 SINGLE COIL SPRING WASHER	1
38		00-0500-0531 M5 EXTERNAL SHAKEPROOF WASHER	1
39		00-0510-0011 M5 x 10 POZI PAN SCREW	1
40		00-0510-0091 M5 x 10 SOCKET HD SCREW	1
41		00-0600-0511 M6 SINGLE COIL SPRING WASHER	1
42		00-0625-0111 M6 x 25 HEX HEAD SCREW	1
43		00-0800-0511 M8 SINGLE COIL SPRING WASHER	4
44		00-0800-0551 M8 WASHER	4
45		00-0816-0091 M8 x 16 CAP HEAD SCREW	4
46		00-2000-0501 M20 PLAIN WASHER FORM B Z/P	2
47		00-2000-0521 M20 INTERNAL SHAKEPROOF WASHER	1
48		00-2000-0701 M20 FULL NUT Z/P	1
49		02-3250-0000 M8 FAN DISC WASHER ZINC PLATED	1
50		02-4555-0000 BELT TENSIONER [ROSTA]	1
51		02-4556-0000 DRIVE BELT PJ584	1
52		03-8054-0000 MOTOR MOUNTING PLATE	1
53		04-0279-0000 CABLE TIE - BLACK LK3X	2
54		04-3931-0000 MOTOR 550W 4 POLE 230V 50 Hz	1
55		04-3925-0000 RELAY 230V 550W MOTOR	1
56		04-3898-0000 10UF RUN CAPACITOR	1
57		04-3932-0000 51 - 68UF START CAPACITOR	1
58		NOT USED	
59		04-3901-0000 ORBIS COMPACT WIRING LOOM - NOT SHOWN ON DRAWING	1
60	<b>05-4401-0000</b>	<b>ORBIS COMPACT DRIVE PULLEY ASSEMBLY</b>	
61		00-0800-0751 M8 1/2 NYLOC NUT	3
62		00-0830-0091 M8 X 30 SKT CAP SCREW BZP	3

63		02-3846-0000 BEARING 6005-2RS FAG-KBC	2
64		03-6077-0000 ENGAGEMENT HUB	1
65		03-8129-0000 CENTRE SPINDLE	1
66		02-4554-0000 CIRCLIP EXTERNAL 25mm ST/ST	1
67		03-8055-0000 ORBIS COMPACT DRIVE PULLEY	1
68	<b>05-4434-0000</b>	<b>ORBIS COMPACT TENSION ROLLER ASSEMBLY</b>	
69		M8 WASHER	1
70		M8 1/2 NYLOC NUT	1
71		M8 x 45 HEX HEAD SET SCREW Z/P	1
72		BEARING 6002-2RS	2
73		ORBIS COMPACT ALUMINIUM IDLER PULLEY	1
74		ORBIS COMPACT IDLER PULLEY BEARING SPIGOT	1
75	<b>05-4422-0000</b>	<b>ORBIS COMPACT MOTOR COVER ASSEMBLY</b>	
76		02-0264-1000 NYLON TUBING 8mm PNSM 8-6	0.18
77		02-0264-1000 NYLON TUBING 8mm PNSM 8-6	0.04
78		02-3465-0000 SELF TAPPER (INNER SHIELD)	4
79		02-3636-0000 BULKHEAD FITTING PM1208E	1
80		02-4496-0000 O-RING	4
81		02-4575-0000 8 x 5/16 PAN POZI PLASFIX B/ZP	4
82		03-5482-0000 VACUUM HEAD DECAL 60 x 60 - NOT SHOWN ON DRAWING	1
83		03-6342-0000 M15x3MM PLAIN WASHER RUBBER NEOPRENE 15MM ID	1
84		03-8051-0067 ORBIS COMPACT MOTOR COVER JET BLACK RAL9005	1
85		03-8052-0035 ORBIS COMPACT FAN COVER (RAL 5021)	1
86		03-8053-0024 ORBIS COMPACT INNER DISC (BLACK)	1

Truvox International Ltd.,  
 Third Avenue, Millbrook,  
 Southampton. Hampshire.  
 SO15 0LE.

Service & Spares: 023 80706601  
 Customer Services: 023 80706600  
 General Enquiries: 023 80702200



06.09.13		2	Kit 68 added	NPD									
21.09.11	1027	1	MOTOR CHANGE-NOW LEMAC	NMN	SCALE	NTS	TITLE	GENERIC ORBIS COMPACT ASSY					
30.09.09		B	CENTRE SPINDLE CHANGE	MC	CHECKED	SJ	PRODUCT	DRAWING/PART No					
07.07.06		A	NEW DRAWING	SJ	DRN	SJ	OB28240	09-1059-0000	A4	SHEET 1 OF 1 SHEETS			
DATE	ECN	ISS	REVISION RECORD	DR	CHK								

# OB28240 ORBIS COMPACT HANDLE PARTS LIST

**230V 50/HZ**

**05-4423-0000 - UK**

**05-4483-0000 - EURO**

**05-4515-0000 - OZ**

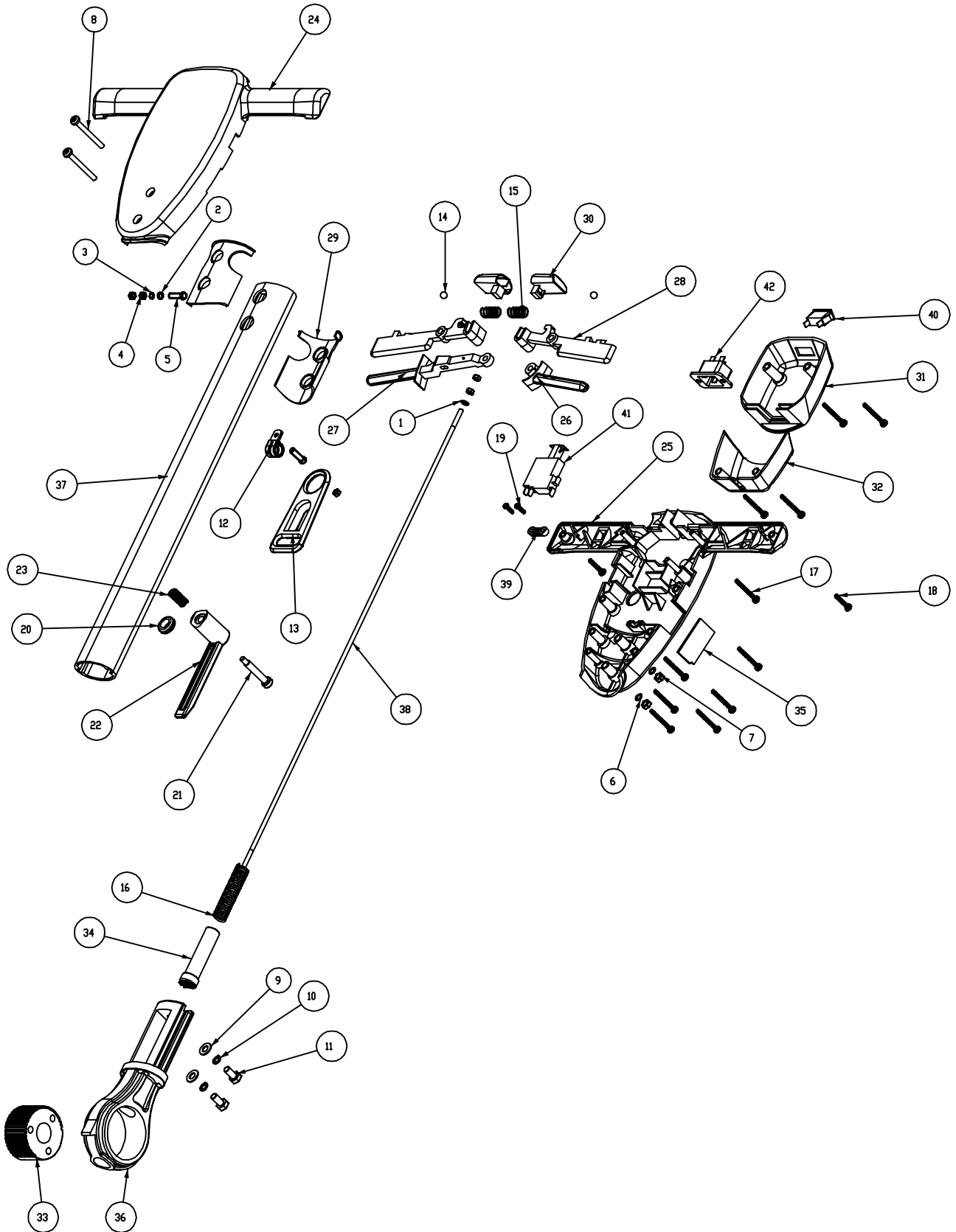
**SERIES B**

Service Parts List Issue 5 Dated 19th July 2011

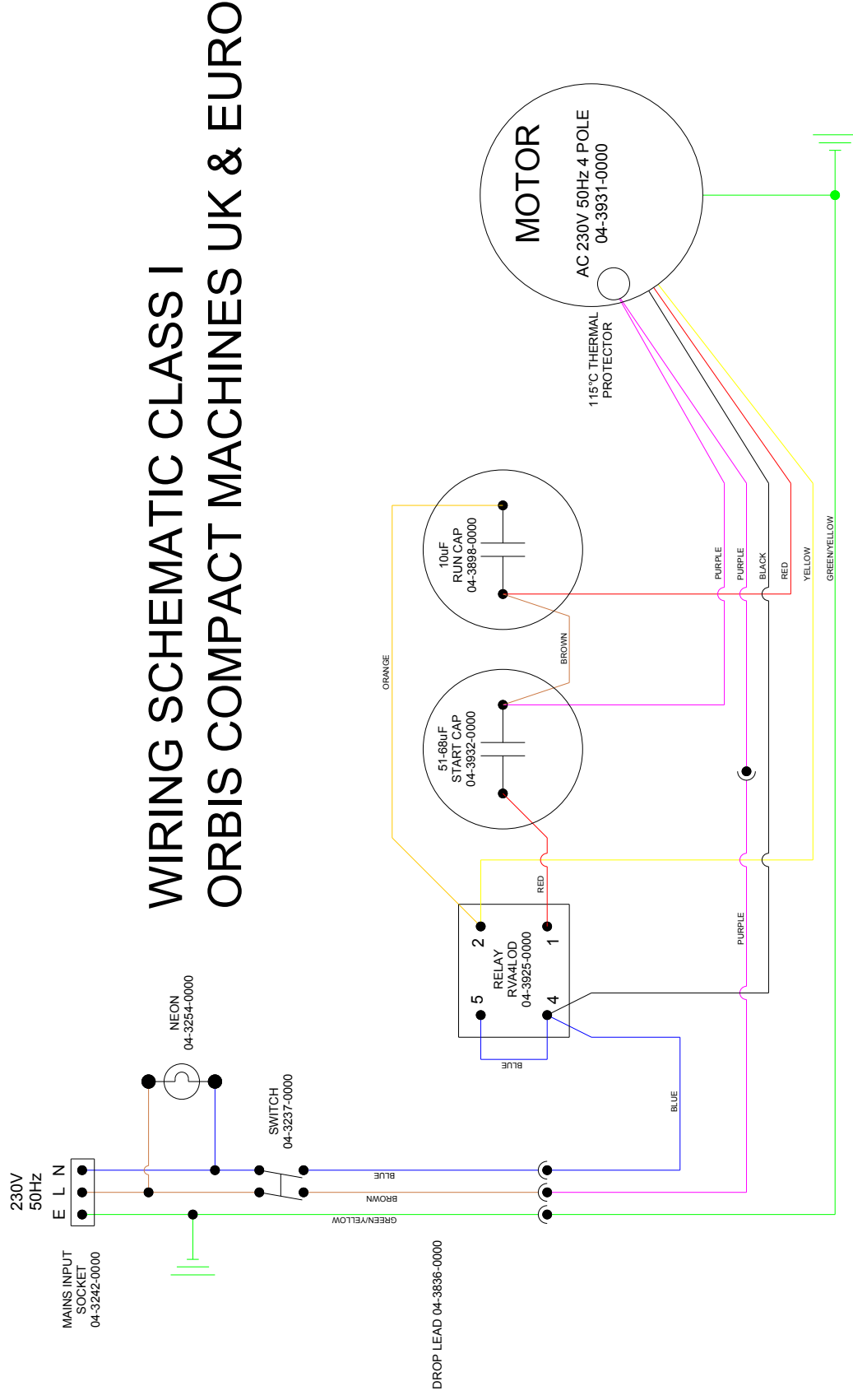
Ref. Drawing 09-1060-0000 Issue A Dated 7th July 2006

Drawing Ref.	Assembly / Kit Number	Description / Part Number		Qty
	<b>OB28240 &amp; OB28240/EURO &amp; OB28240/OZ</b>	<b>ORBIS COMPACT 230V 50HZ UK &amp; EURO &amp; OZ HANDLE PARTS LIST</b>		<b>1</b>
	<b>05-4423-0000 (i)</b>	<b>ORBIS COMPACT HANDLE ASSEMBLY UK SEE DRAWING 09-1060-0000</b>		
<b>OR</b>	<b>05-4483-0000 (ii)</b>	<b>ORBIS COMPACT HANDLE ASSEMBLY EURO SEE DRAWING 09-1060-0000</b>		
<b>OR</b>	<b>05-4515-0000 (iii)</b>	<b>ORBIS COMPACT HANDLE ASSEMBLY OZ SEE DRAWING 09-1060-0000</b>		
<b>1</b>		00-0500-0501	M5 WASHER FORM A	1
<b>2</b>		00-0500-0511	M5 SINGLE COIL SPRING WASHER	1
<b>3</b>		00-0500-0531	M5 EXTERNAL SHAKEPROOF WASHER	1
<b>4</b>		00-0500-0701	M5 HEX FULL NUT BZP	5
<b>5</b>		00-0520-0111	M5 X 20 HEX SET SCREW BZP	2
<b>6</b>		00-0600-0521	M6 INT S/PROOF WASHER BZP	2
<b>7</b>		00-0600-0701	M6 HEX FULL NUT BZP	2
<b>8</b>		00-0655-0011	M6 X 50 HEX SET SCREW A2	2
<b>9</b>		00-0800-0501	M8 WASHER TYPE B	2
<b>10</b>		00-0800-0511	M8 SINGLE COIL SPRING WASHER	2
<b>11</b>		00-0816-0111	M8 x 16 CAP HEAD SCREW	2
<b>12</b>		02-3151-0000	P CLIP - SPEC CPC 13 M5MSNE	1
<b>13</b>		02-3152-0000	CABLE STRAIN RELIEF BRACKET REF: BLACK 1053-4-00	1
<b>14</b>		02-3186-0000	MILD STEEL BALL BEARING 10MM DIA	2
<b>15</b>		02-3510-0000	HANDLE INTERLOCK SPRING SS5695 BS2056 27.3L 12.7OD	2
<b>16</b>		02-3511-0000	GEAR DOG SPRING 1139X2 13.98MM, 75.78MM COILS 16.4	1
<b>17</b>		02-3516-0000	KB50 x 40 SELF TAPPER	11
<b>18</b>		02-3517-0000	SELF TAPPER (POZI PAN HEAD) KB50 x 25	2
<b>19</b>		02-3518-0000	KB40 X 14 PAN POZI PT SCREW BZP	2
<b>20</b>		02-4210-0000	GROMMET 11.1MM BORE PV 70A	1
<b>21</b>		02-3523-0000	M6x8x40 SHOULDER BOLT	1
<b>22</b>		03-5403-0000	CABLE WINDER	1
<b>23</b>		03-5410-0000	CABLE WINDER SPRING	1
<b>24</b>		03-6086-0067	HANDLE CASE FRONT JET BLACK RAL9005	1
<b>25</b>		03-6087-0067	HANDLE CASE BACK JET BLACK RAL9005	1
<b>26</b>		03-6088-0067	SOLUTION LEVER JET BLACK RAL9005	1
<b>27</b>		03-6089-0067	GEAR LEVER JET BLACK RAL9005	1
<b>28</b>		03-6090-0067	TRIGGER LEFT & RIGHT JET BLACK RAL9005	2
<b>29</b>		03-6091-0000	HANDLE RUBBER BOOT MOULDING 70 SHORE NEOPRENE	2
<b>30</b>		03-6092-0067	INTERLOCK JET BLACK RAL9005	2
<b>31</b>		03-6093-0067	CORD INLET BOX JET BLACK RAL9005	1
<b>32</b>		03-6094-0067	CORD RETAINER JET BLACK RAL9005	1
<b>33</b>		03-6096-0000	HANDLE ADJ GEAR	1
<b>34</b>		03-6097-0000	HANDLE ADJUSTING GEAR DOG	1
<b>35</b>		03-6693-0067	HANDLE SOCKET BLANKING PLATE JET BLACK RAL9005	1
<b>36</b>		03-7831-0000	ALUMINIUM KNUCKLE PRESSURE DIE CAST	1
<b>37</b>		03-8059-0000	ORBIS COMPACT OVAL TUBE	1
<b>38</b>		03-8060-0000	ORBIS COMPACT GEAR ROD	1
<b>39</b>		04-0237-0000	CABLE CLAMP BAR TYPE CLAMP NO: 704	1
<b>40</b>		04-3254-0000	GREEN INDICATOR LIGHT 230V C0430ATNAC	1
<b>41</b>		04-3237-0000	SWITCH 700-2/6 REF 1620017380 WITH T-SECTION ACTUATOR	1
<b>42</b>		04-3242-0000	16amp INPUT SOCKET STF950 A1 6.3 X 0.8MM PUSH IN TAGS	1
<b>43</b>		04-3836-0000	ORBIS COMPACT DROP LEAD - (NOT SHOWN ON DRAWING)	1
<b>44</b>		04-3839-0000	ORBIS COMPACT HANDLE WIRING KIT - (NOT SHOWN ON DRAWING)	1
<b>45</b>		03-6148-0000	ORBIS HANDLE LABEL - (NOT SHOWN ON DRAWING)	1
<b>46</b>		03-6152-0000	ORBIS MULTILINGUAL LABEL - (NOT SHOWN ON DRAWING)	1
<b>47 (i)</b>		04-3055-0053	CORDSET UK PLUG 16A CONNECTOR (NOT SHOWN ON DRAWING)	1
<b>47 (ii)</b>		04-3055-0147	CORDSET EURO PLUG 16A CONNECTOR (NOT SHOWN ON DRAWING)	1
<b>47 (iii)</b>		04-3565-0000	20M MAINS CABLE (ORANGE) WITH AUSTRALIAN PLUG (NOT SHOWN ON DRAWING)	1

Truvox International Ltd.,  
 Third Avenue, Millbrook,  
 Southampton. Hampshire.  
 SO15 0LE.  
 Service & Spares: 023 80706601  
 Customer Services: 023 80706600  
 General Enquiries: 023 80702200



					SCALE	NTS			TITLE	GENERIC ORBIS COMPACT HANDLE			
					CHECKED	SJ			PRODUCT	OB28240			
07.07.06		A	NEW DRAWING	SJ	DRN	SJ			DRAWING/PART No	09-1060-0000		A4	SHEET 1 OF 1 SHEETS
DATE	CRO No	ISS	REVISION RECORD	DR	CHK								



PART NO.		TITLE:		SCALE:		GEN TOL		MATERIAL:		FINISH:		TRUVOX INTERNATIONAL LIMITED	
1	1027	NOW USING LEMAC MOTOR CAPS AND RELAY		NMN	20 SEP 11	X	± 0.5					ORBIS CLASS 1 230V 50HZ MOTOR WIRING	
A	N/A	NEW DRAWING		MDC	12 FEB 09	X.X	± 0.2					PART NO. 09-1111-0000	
ISSUE	ECN	CHANGES		INT	DATE	X.XX	± 0.1						
						ANG	± 0.5°						
						DRN	CKD						
						NMN							